

## AMETRINE - Mary Ann Cut

96 index gear • 12 mm • 6.7 carats

All polishing is done with Cerium Oxide.

### PAVILION

P1	42.00°	6-12-18-24-30-36-42-48-54-60-66-72-78-84-90-96 Cut to a center point
P2(G)	90.00°	Same as P1
P3	00.00°	Grind tip of pavilion flat and polish, 4 mm wide.

### CONCAVE

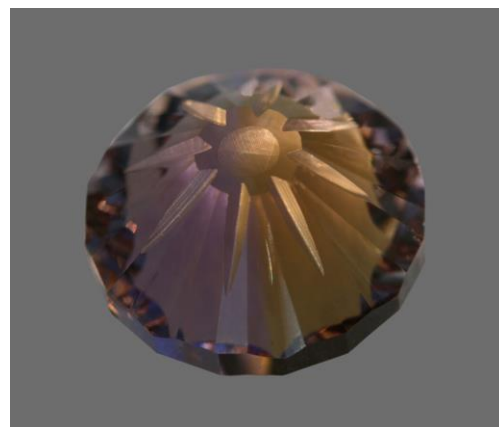
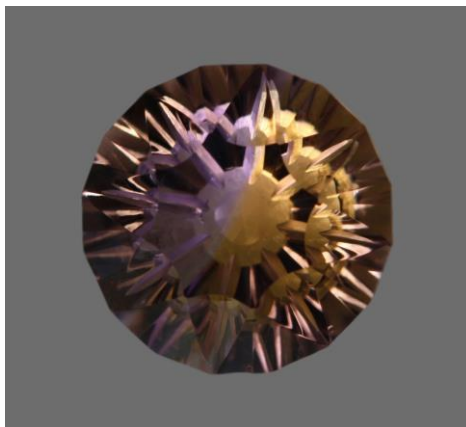
CC1		Using the 4 mm ball tool and 1,200 Diamond Paste, grind a dimple centered in P3 - should be 2 mm wide. Do <u>not</u> polish.
CC2	44.00°	3-15-27-39-51-63-75-87 Using the 8 mm mandrel with 1,200 paste cut a concave starting at the girdle and ending at the edge of P3. Polish with Cerium.
CC3	44.00°	9-21-33-45-57-69-81-93 Using the slice tool, cut a slice in the lower edge of the pavilion. The slice should cut into P3, but stop before the dimple. Do <u>not</u> polish.

### CROWN

C1	42.00°	96-6-12-18-24-30-36-42-48-54-60-66-72-78-84-90 Cut to a finish girdle
----	--------	--

### CONCAVE

CC1	35.00°	3-15-27-39-51-63-75-87 Cut with 8 mm mandrel and 1,200 paste; stop at girdle; polish with Cerium.
TABLE	00.00°	Stop before concave



Authorized factory representative for Ultra Tec Faceting Machines, Equipment & Accessories