

## BI-COLOR CITRINE - Morgan's Star Cut

80 index gear • 13 mm • 7.7 carats

All polishing done with Cerium Oxide.

### PAVILION

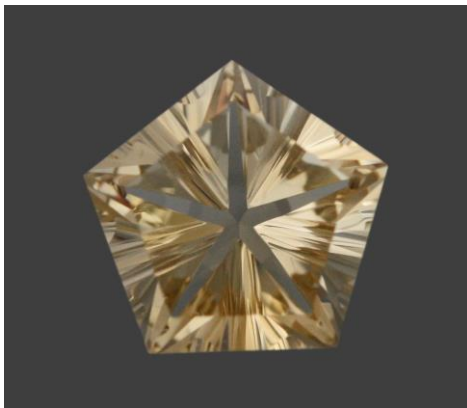
P1	41.00°	80-16-32-48-64	Cut to a center point
P2(G)	90.00°	80-16-32-48-64	Cut to meet P1
P3	33.80°	8-24-40-56-72	Cut to a center point. Note: P3 should be cut with a fine lap. Only take the sharp edge off and polish. Cuts very fast (just touch the lap).

### PAVILION - CONCAVE

CC1	42.50°	Using the 8 mm mandrel tool and 1,200 Diamond Paste, cut a concave in the center of the facet. The concave will start at the girdle. Finish cutting before reaching the end of the pavilion.
CC2	44.50°	8 mm side grooves; 2 mm from first groove's center point; stop before facet edge.

### CROWN

C1	46.00°	80-16-32-48-64
TABLE	00.00°	75% of stone's width



Authorized factory representative for Ultra Tec Faceting Machines, Equipment & Accessories