



TOPAZ - Booker's Cross Cut

96 index gear • 10 mm • 6.3 carats

All polishing is done with Alumina.

PAVILION

| | | | | |
|-------|--------|-------|-------|---------------------|
| P1 | 42.00° | 96-48 | 72-24 | Cut to centerpoint |
| P2(G) | 90.00° | 96-48 | 72-24 | Cut to girdle width |

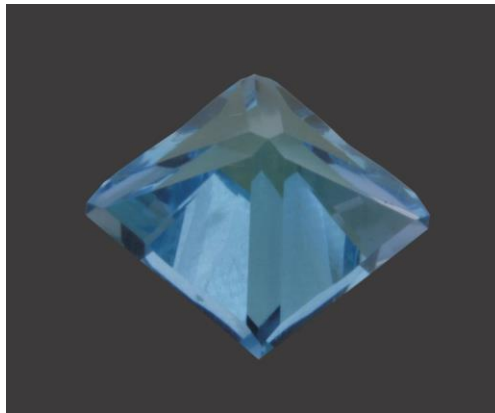
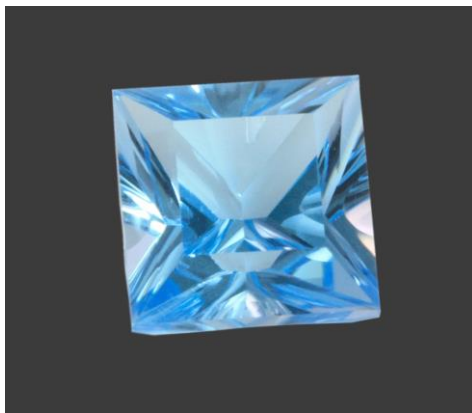
PAVILION - CONCAVE

This diagram was written specifically for those using an Ultra Tec Fantasy Machine and an Ultra Tec V5 Machine, but it could be modified to work with other machines.

Align Fantasy Machine mast to match mast on faceting machine. Set at 96. Set stone on alignment block and set level. Using 8 mm mandrel, cut concave where pavilion facets meet (12-36-60-84) at 32.77° with 1,200 paste (this will be on all four corners). Polish concaves. Cut a 13 mm concave on 96-24-48-72 centered on stone at 44.50° (1,200 polish). Do not cut up too far and hit corner concave facets.

CROWN

| | | | |
|-------|--------|-------------|--------------------|
| C1 | 43.00° | 96-24-48-72 | Cut to make girdle |
| C2 | 41.50° | 96-24-48-72 | Cut to any size |
| TABLE | 00.00° | | 50% width of stone |



Authorized factory representative for Ultra Tec Faceting Machines, Equipment & Accessories