



BI-COLOR NEON GREEN QUARTZ - Izzy's Folly Cut

96 index gear • 15 mm x 10 mm • 8.4 carats

All polishing is done with Cerium Oxide. Preform to a 2:1 ratio.

PAVILION

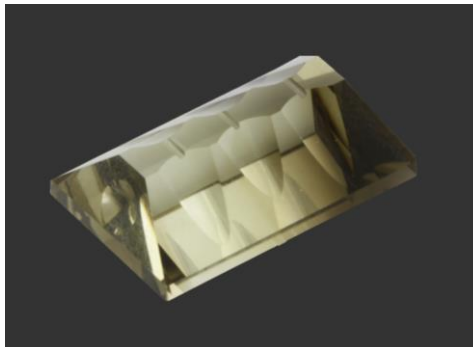
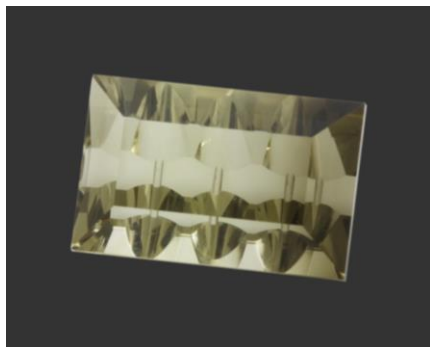
P1	42.00°	48-96
P2	65.00°	24-72
P3(G)	90.00°	24-72 48-96
P4	00.00°	Using the table adaptor, grind and polish the tip of the pavilion (approximately 1/4 the width of the pavilion).

PAVILION - CONCAVE

CC1	37.11°	Center stone over 8 mm mandrel (index on 96) using 1,200 Diamond Paste. Put a concave in the center (side to side) 2/3 of the pavilion. Repeat on 48. Polish both.
CC2	38.50°	Move table 3.70 on dial indicator (D.I.) towards you. Concave on 96 and 48. Use 1,200 paste and then polish. Stop concave just before girdle.
CC3	38.50°	Return D.I. back to 00.00°. Move 3.70 in the opposite direction (away from you). Put two concaves at 48 and 96. Length and width should match CC2.
CC4	90.00°	Center pavilion over slice tool. Lower stone to slice pavilion from concave to opposite concave. Stop when slice reaches both sides.
CC5	65.00°	These will be the dimple's on 24 and 72. Center the 11 mm ball tool on one end of the stone. With 1,200 Diamond Paste, grind a 3.50 (approximately) dimple on 48 then 96. Pre-polish with 2,000 and polish with Cerium. Do <u>not</u> polish slices.

CROWN

C1	42.00°	96-48 24-48	Cut to an even girdle line.
C2	39.00°	24-48 96-48	Finished size should be 50% of crown angles.
TABLE	00.00°	1/3 the width of the stone.	



Authorized factory representative for Ultra Tec Faceting Machines, Equipment & Accessories