



## SUNFIRE CITRINE (Multi-Color) - Autumn Blaze Cut

96 index gear • 15.58 mm • 14.9 carats

### PAVILION

P1	42.00°	96-6-12-18-24-30-36-42-48-54-60-66-72-78-84-90
P2	90.00°	Same as P1

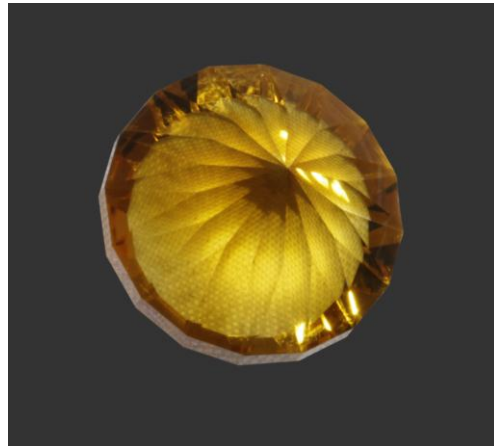
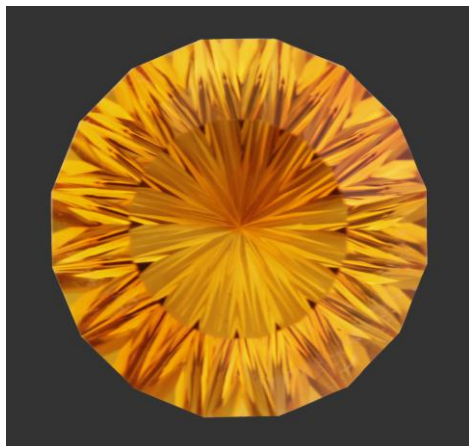
### CONCAVE

CC1	40.00°	3-9-15-21-27-33-39-45-51-57-63-69-75-81-87-93
		Cut from tip of pavilion to girdle

With 1,200 polish on an 8 mm mandrel, cut concave facets on the numbers above. Work from the center point and stop just before the girdle. Pre-polish with 2,000 Diamond Paste and polish with Cerium.

### CROWN

C1	43.00°	96-6-12-18-24-30-36-42-48-54-60-66-72-78-84-90
C2	41.00°	Same as C1 C1 65% - C2 35% of crown angles
C3	TABLE	Cut to 5/8 width of stone



Authorized factory representative for Ultra Tec Faceting Machines, Equipment & Accessories